

I. Overall Description

A. Copy the smut pic below with the characters. Five fingers (thumb included) on the hands with claws.

II. Characters

A. See pictures. Random placement. Make sure to account for the scale with the elephant's thick size and very hung cock.

III. Background

A. None.





Bill Grey



5'10", brown eyes, 9" sheathed cock, larger when knotted headfur. Clawed human hands (4 fingers + thumb) No pawpads.



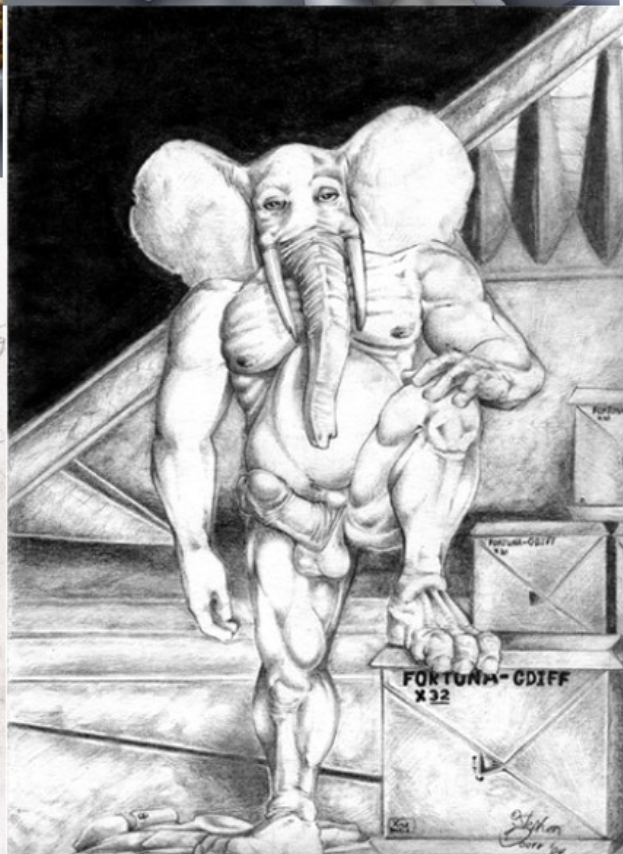
Denga Freeling

5'11". great dane black eyes, headfur, 12" sheathed cock.
Clawed human hands (4 fingers + thumb) No pawpads.



Griff McDuff

7' tall rhino. no headfur. sheathed
15" black cock. black eyes.
Clawed human hands (4 fingers
+ thumb) No pawpads.



Hardi Stracker

12' tall african elephant. Brown eyes. 3 fingered + 1 thumb hands & stumped feet. No hair or pawpads. Human style cock dimensions are 3' by 9". Black head.