

**I. Overall Description**

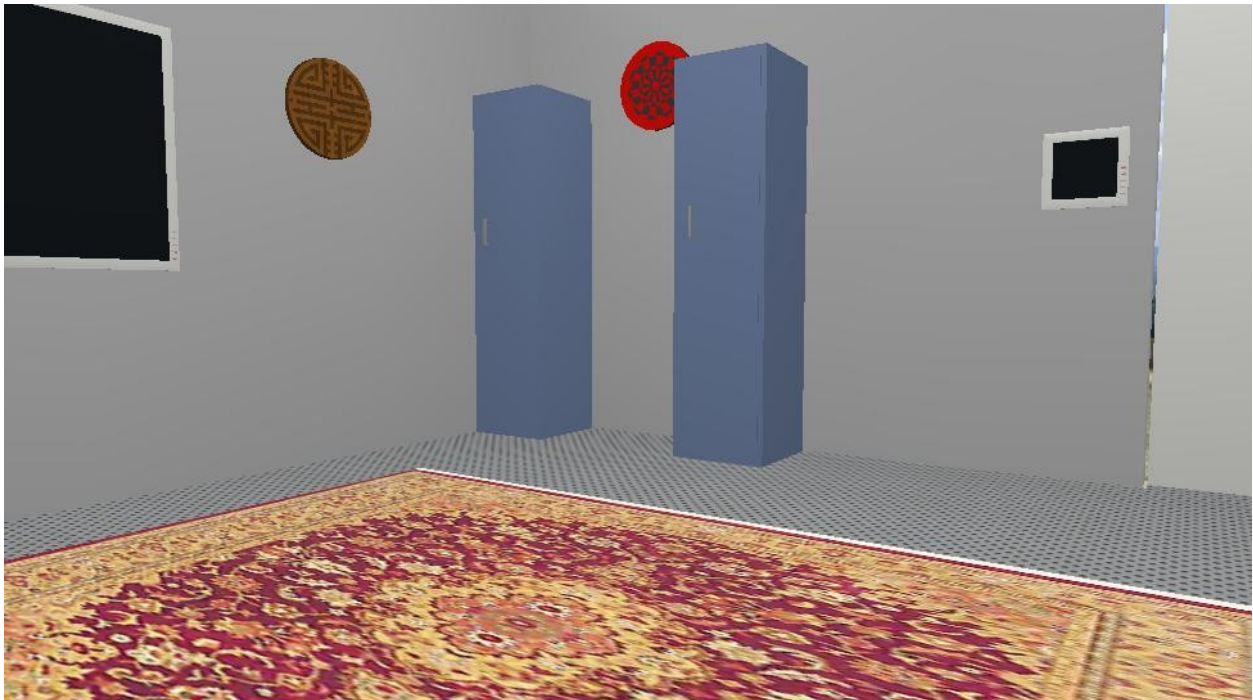
A. The rhino fucking the shit out of this random bear chick. Uniforms are strewn all over the floor, underclothes, etc.

**II. Characters**

A. See pictures. Make the chick the same height as the rhino, so you'll need to tweak the scale. The woman is a normal brown bear.

**III. Background**

A. See picture below.



## Griff McDuff

7' tall rhino. no headfur. sheathed 15" black cock.  
black eyes. Clawed human hands (4 fingers + thumb)  
No pawpads.





