

**I. Overall Description**

A. Jess trying to force Matt's knot into her body.

**II. Pose**

A. Matt is on his back.

B. Jess is forcing the wolf's knot into her and she is straining. She has that horse dong wedged into her ass. The fox is way too full.

**III. Characters**

A. Matt – wedding ring on

B. Jess – 9 months pregnant

**IV. Background**

A. Follow render for framing. See van ref.

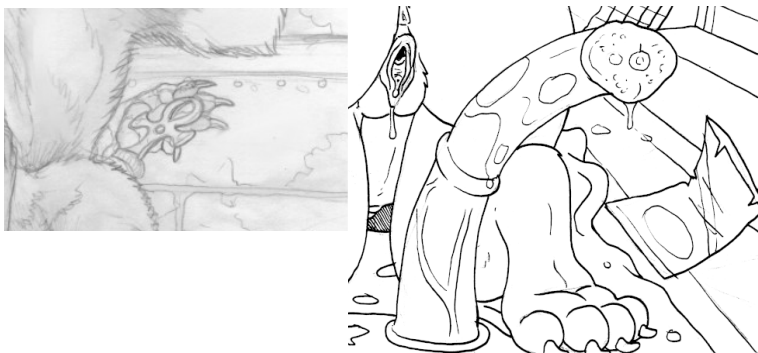
**V. Clutter**

A. Alcohol

B. Whatever comes to mind that teens really shouldn't be doing.

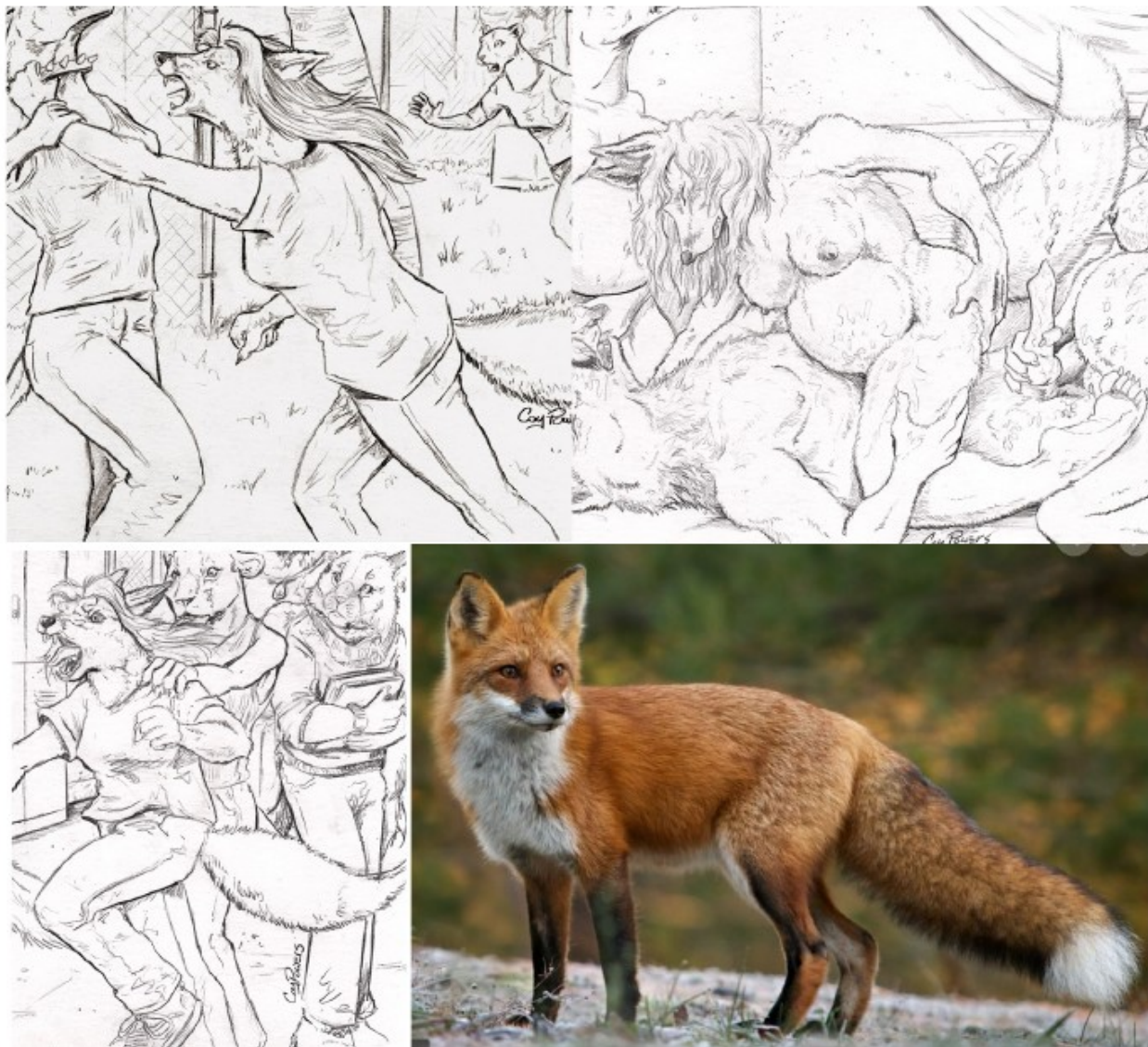


*If specified to be preggo, make em this fat.*



Jessica Poxx (Debán)

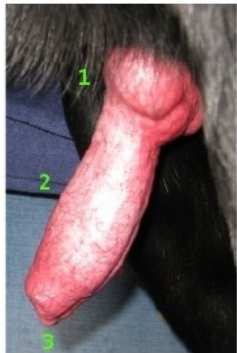
- Version: 3
- Species: Red Fox  
Height: 5'9"  
Weight: 132 pounds before pregnancy. 220 pounds at giving birth.  
Chest size: Full C cup before pregnancy. DDD cup at nine months.  
Anatomy: Animal (google dog vagina)  
Build: Athletic with a little chub.  
Eye color: Brown  
Hair color: Blonde  
Markings: See the fox pic below. If you're doing lineart, you needn't bother. It is more for a full coloring reference.  
Other: White tailtip, black ear tips. Four fingers with thumb, with clawtips. Plantigrade feet with clawtips. Socks.



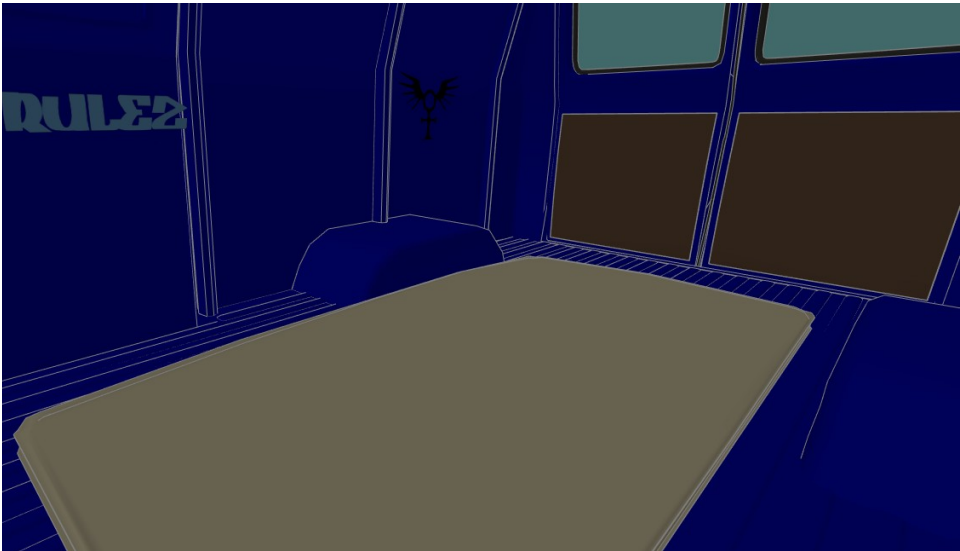
Matt Debán

Version: 2.2

Species: Timberwolf  
Height: 5'9"  
Weight: 150 pounds  
Anatomy: Sheathed, anatomically correct cock with knot. 9" in length.  
Eye color: Blue  
Hair color: N/A. Headfur  
Fur color: Gray with white ventral stripe. Emulate fur color patterns from the RL snow pic.  
If specified: Wedding on left ring finger.  
Other: Black muzzle mark on both sides. Four fingers with thumb, with clawtips.  
Plantigrade feet with clawtips.



BACKGROUND RENDER/FRAMING



# Sex van in Adrienne’s clearing 2023; version 7

- I. Note to artist
  - A. Depending on the framing of whatever 3D render I make, you’ll likely never need all the below detail. I like to be thorough. Things I can’t do are fuck up this van and make it look like it’s been abandoned for probably 20 years with nature starting to tear into it.
- II. The sex van
  - A. Make & Model
    - i. 1971 Chevy Van G10
  - B. Paneling vs Windows
    - i. I make this point because some refs on the Internet have panel window variants. It was more difficult than it needed to be...
    - ii. Keep the rear door windows.
    - iii. Remove the windows on the right side.



- a)
  - C. Color
    - i. Copy the shade of blue from reference pics.
  - D. Exterior





iii.  
iv. Side door



b)  
E. Up front

i.





- ii.
- III. My stuff added to vehicle
  - A. Emblem change
    - i. If the shot calls for it, replace the chevy emblem with this.
      - a) ???
  - B. Graffiti
    - i. PNGS



a)



b)



c)

- If this is a color piece, change this color to white.



d)

- ii. RENDERS
  - a) Graffiti placement is approximate.



b)

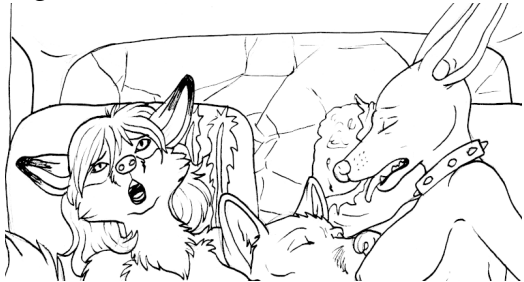


c)



d)

C. Damage



i.

- a) Fucked up upholstery on the seats.
- b) Cracks in windshield
- c) Driver side, passenger, and rear door windows are intact.

D. Litter

- i. Never needs to be consistent between multiple pictures. It will always be different.
  - a) Alcohol
  - b) Drugs
  - c) Assorted teen stuff

E. Mattress



i.

- a) Obviously don't make it look so perfect and new.