

I. Overall Description

- A. Denga Freeling tit fucking his girlfriend Tera Bravehart on the floor of their friends' quarters with an already knotted erection.

II. Story Scene

- A. *By this time, Denga had dismounted Tera and already rolled the big cat on her back where he was enthusiastically tit-fucking the leopard's ample cleavage. The large danish erection easily made its way up to his partner's hungry mouth. Tera took to fingering herself with a free paw while rasping her rough feline tongue along Denga's slick rod. Denga brushed a paw across the leopard's face, kneading at her right ear softly. His other paw gently teasing at one of her swollen nipples. Tera captured the dane's thick pole in her muzzle, circling her tongue around the dog's sensitive cock head.*

The leopardess purred heavily, rasping her tongue along the dane's sensitive cock head. She wanted to milk this great dane for all he was worth. Unfortunately, she had him so worked up that Denga's knot hadn't receded. She was blasted in the face with another barrage of canine seed. Denga whimpered, his thick pole releasing its sticky seed into the senior officer's hungry mouth. That was all she was going to get out of the smart ass dane for tonight.

III. Pose

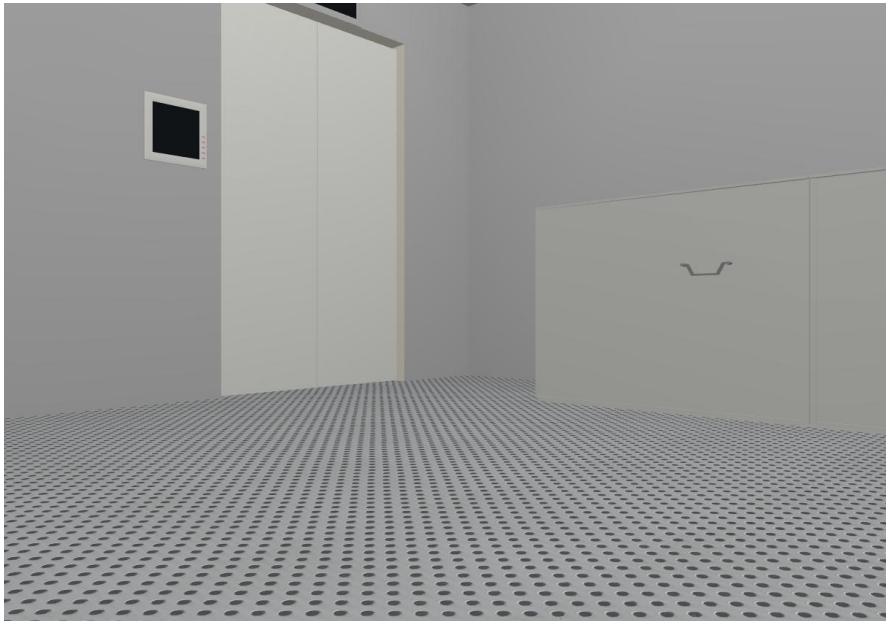
- A. Should I change anything? Is this even possible let alone comfortable? (input?)

IV. Characters

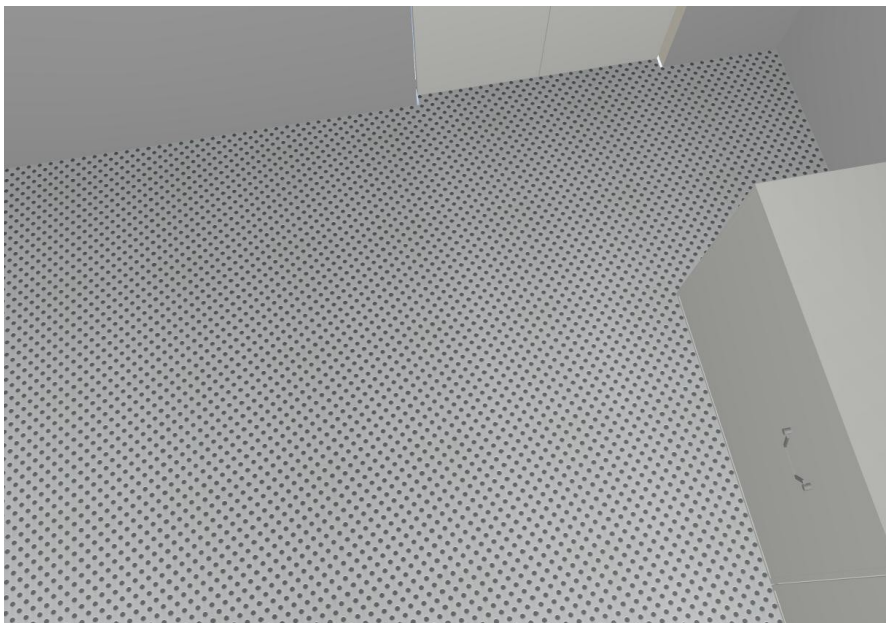
- A. Tera Bravehart
i. Leopardess, 5'11", brown eyes, white hair, C cup.
B. Katt Monroe
i. Purple feline, 5'9", blue eyes, white hair, D cup.
C. Denga Freeling
i. Great dane, 5'11", black eyes, headfur, sheathed and knotted cock. (9" cock without knot/12" when swollen and knotted) Can fully tie to Tera. Poor thing.
D. Griff McDuff
i. 7', black eyes, no headfur/hair, 15" sheathed black cock.

V. Angle

- A. See render. Zoom up. Overhead shot.



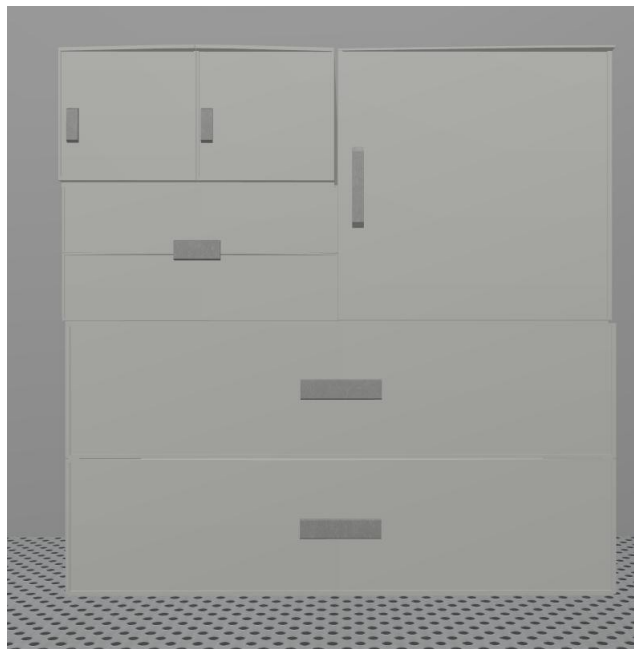
Angle 1. Not too particular about this one. Thinking about a tight shot but I want to see everything on her chest. Get a real good close up but have most of Denga still in it.



Angle 2. Favoring this one. Tera sprawled for all to see. The others and table cut off completely. The bunk bed isn't much of an issue.



Threesome preceding the tit fuck.



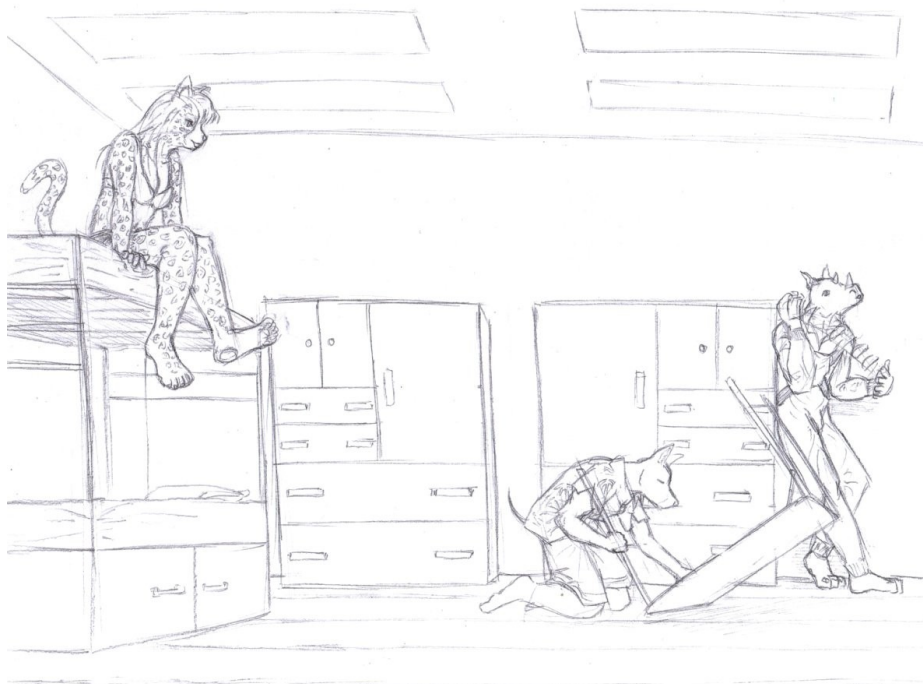
Proper footlocker config; if needed



Poker scene that should be cut off; maybe partially? No need to recreate it

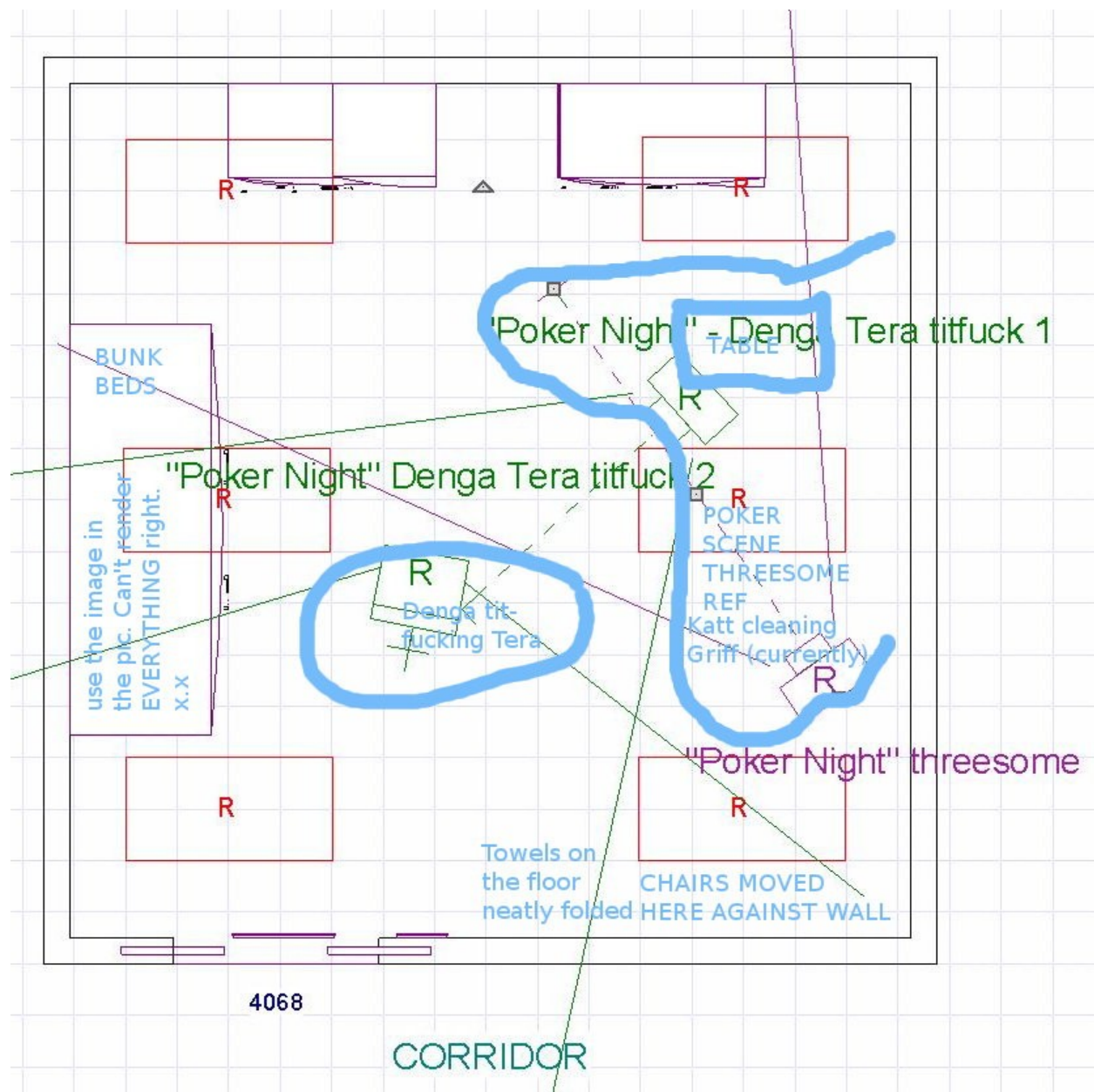


The pair in question going at it in the lady's quarters. Ignore pawpads.



Ignore the footlocker configs. They need to be tweaked. Also ignore the light placement. It may be off. This is before the poker game. Perfect reference of bunk bed.





Room layout