

I. Description

A. Overall Picture

- i. Copying the sketched picture on page 2, poses and everything, and completing it.

B. Poker Chips

i. Values

- a) Green: 1
- b) Blue: 5
- c) Red: 10

ii. Individual Assignment

a) Katt

- Green: 10
- Blue: 2
- Red: 13

b) Denga

- Green: 13
- Blue: 3
- Red: 0

c) Tera

- Green: 6
- Blue: 5
- Red: 9

d) Griff

- Green: 7
- Blue: 2
- Red: 0

iii. Center of pile

a) Tera's sports bra

- b) Green: 8
- c) Blue: 12
- d) Red: 4

C. Clothes (See background pics for further info)

i. Katt Monroe

- a) Tanktop: purple
- b) Purse: black
- c) Sweat Pants: blue

ii. Denga Freeling

- a) Hawaiian Shirt: Yellow/Green
- b) Boxers: Blue

iii. Tera Bravehart

- a) cut off at thigh jeans: blue
- b) Sports Bra: green

iv. Griff McDuff

- a) Flightsuit: gray



Katt Monroe
Feline, 5'9", D cup, white hair. No pawpads
Clawed human hands (4 fingers + thumb)



Tera Bravehart

Leopardess, white tail tip, brown eyes, white hair.

C cup chest

Clawed human hands (4 fingers + thumb). No pawpads.



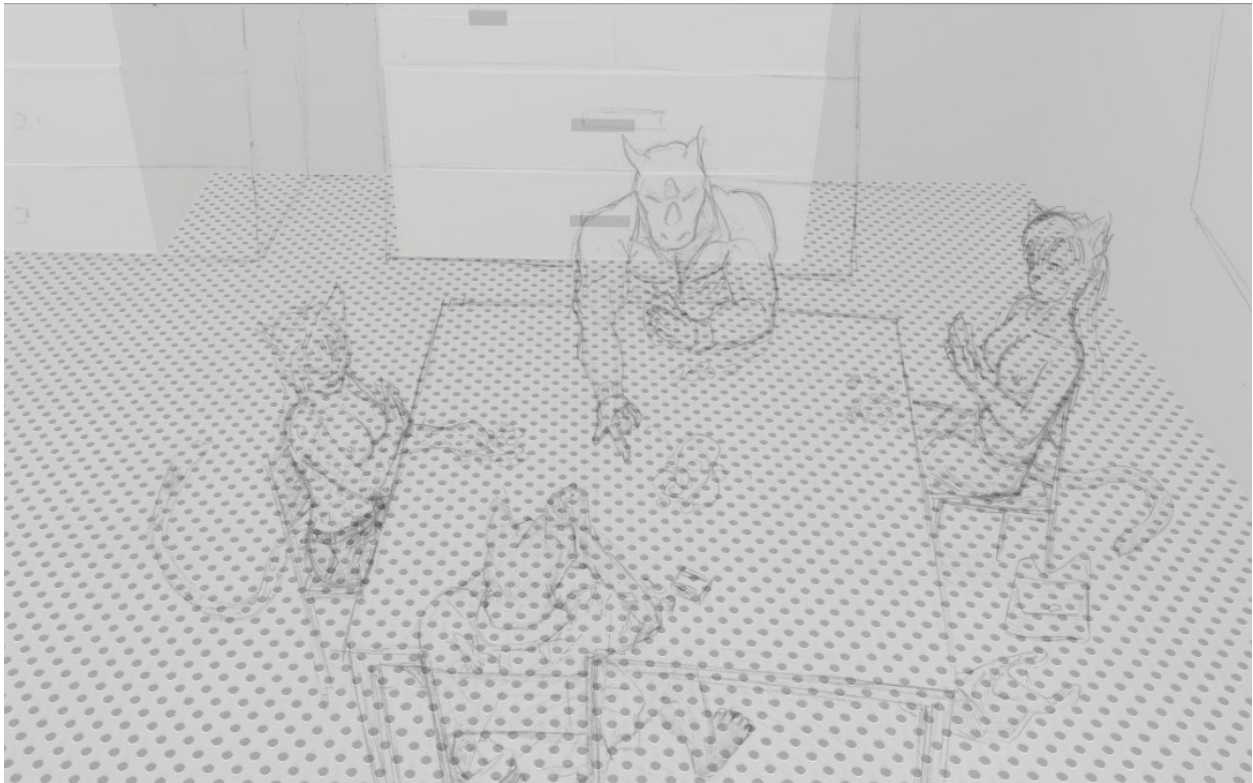
Griff McDuff

7' tall rhino. no headfur. sheathed
15" black cock. black eyes.
Clawed human hands (4 fingers
+ thumb) No pawpads.

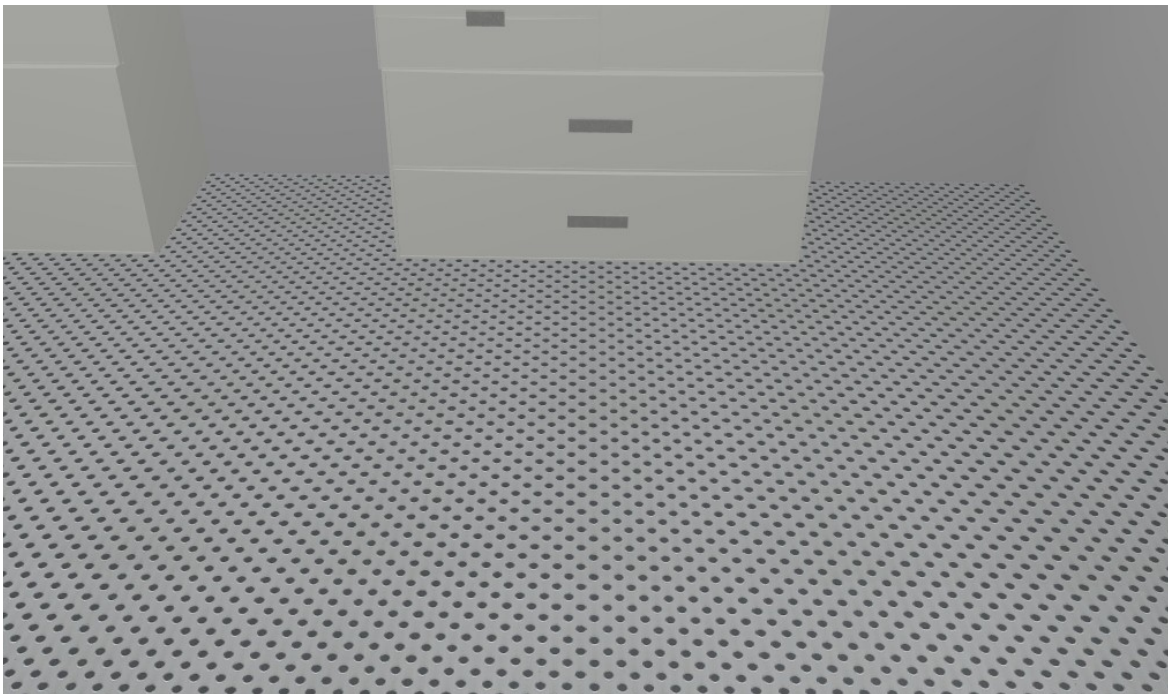


Denga Freeling

5'11". great dane black eyes, headfur, 12" sheathed cock.
Clawed human hands (4 fingers + thumb) No pawpads.



footlocker positioning fix



room color scheme