

I. Overall Description

- A. The wolfess going down on the orca. Cream dripping down the rest of the shaft and balls onto the floor, if you would waive your tame requirement for this. It's a very messy affair.

II. Characters

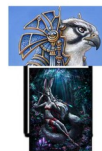
- A. Wolfess
- i. Nine months preggo. Keep the rollerblades on. She has both paws around the large cock.
- B. Orca
- i. Orgasm face.
 - ii. Twice the size of the wolfess with a huge uncut human style member. Her muzzle barely fits around it.

III. Background

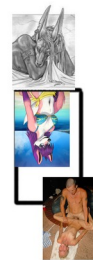
- A. The central breeding chamber of Anubis's breeding pyramid. It should interconnect with the other four pieces. Work your magic!
- i. Pillars
 - a) There are two (of four, rear two unseen) acting as supports for the entire room.
 - ii. Bricks
 - a) Lots of bricks. It is a pyramid!
 - iii. Water/fountains
 - a) Have them flowing down via the walls and somewhere else? No huge central fountain.
 - iv. Curtains
 - a) Try not to do too many. We've done too many curtains. ;)
 - v. Pillows
 - a) Those stone breeding pedestals will need them. Or some other form of padding.
 - vi. Lighting
 - a) Candles are okay.
 - b) Think of some centralized mage/magical lighting.
 - vii. Hieroglyphs
 - a) If there's room...

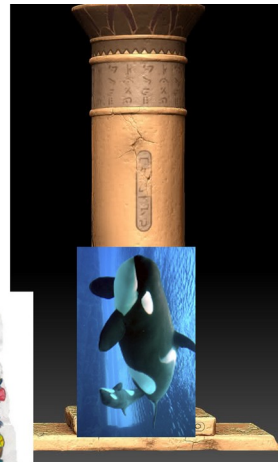


all fours



reverse cowgirl





Placement and positioning