

I. Overall Description

A. Fara Phoenix, very preggo, sprawled out on Fox's chair/bed thing, sucking Fox's knotted cock while his load dribbles out everywhere on her.

II. Characters

A. See pictures.

III. Background

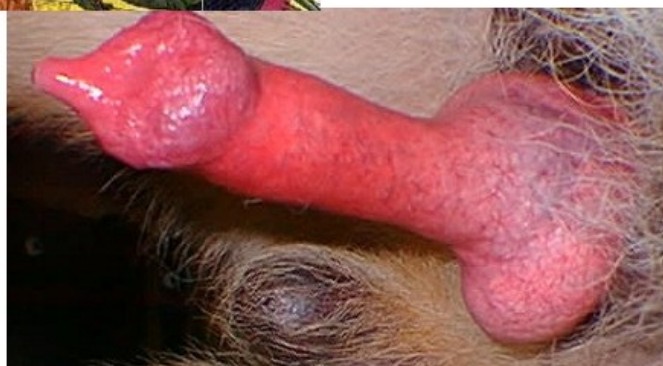
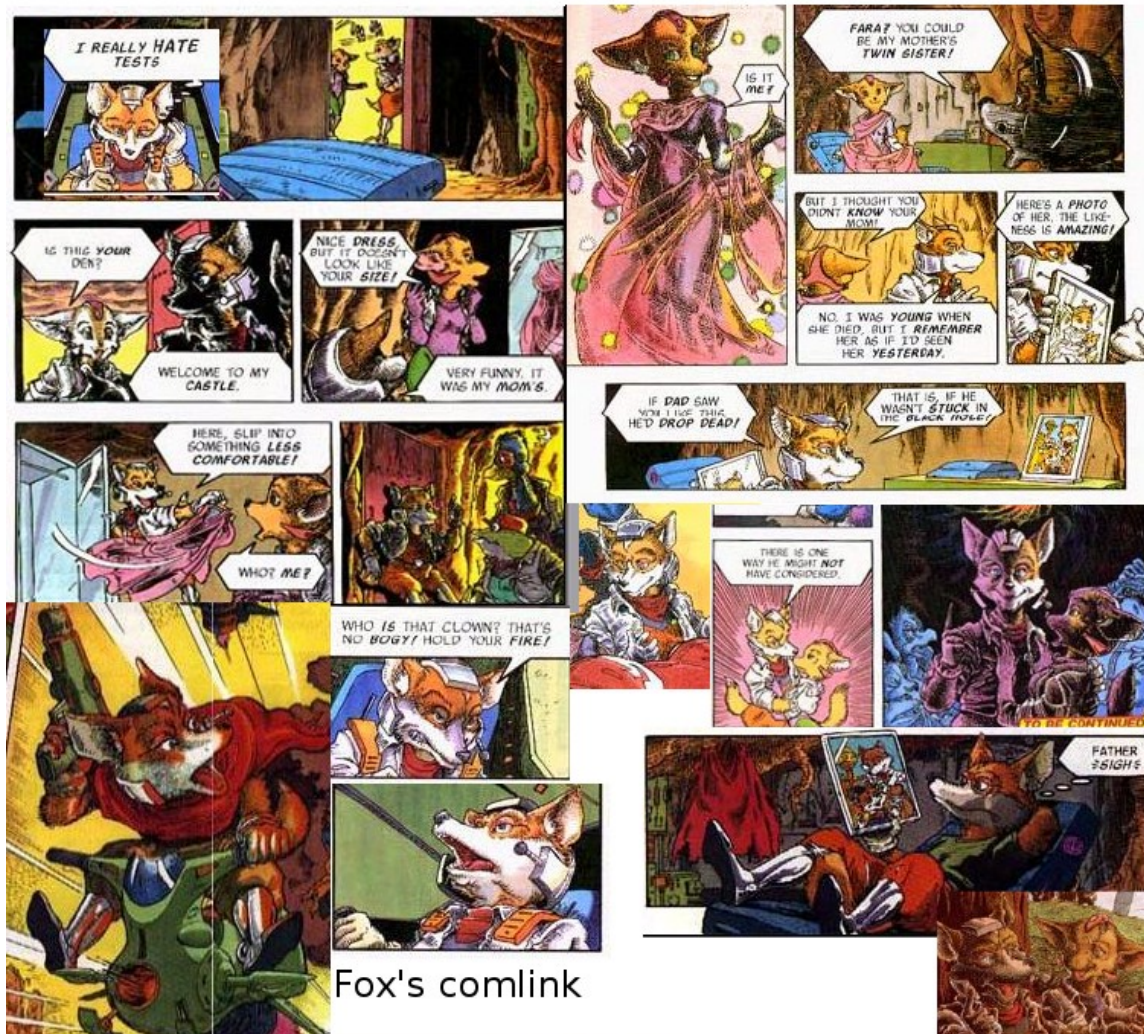
A. Fox's Papetoon bedroom.



If specified to be preggo, make em this fat.

Fox McCloud

Red Fox, 5'10", green eyes, headfur, 9" sheathed cock with knot. Ignore the com-link unless otherwise noted. No pawpads.



Example of a knotted cock. The knot swells during climax. Fox's knot is the size of a baseball.

Fara Phoenix

fennec vixen, 5'5", emerald green eyes, pink nipples
heavy C cup chest, headfur. Clawed human hands (4
fingers + thumb) Ignore comlink unless otherwise
noted.







