

I. Overall Description

A. A Cerberus impregnating this Egyptian feline female on a stone breeding tablet.

II. Pose

A. Cerberus

i. Male is at the far end of the tablet facing the viewer.

B. Egyptian feline

i. Cradling her tits together and twisting her nipples.

III. Characters

A. Egyptian feline (no pic exists, just this text description)

i. Soft, stringy strands of white escape from a loose, messy ponytail. Mostly the messiness is from being wind whipped. She's quite tall, standing at six foot three inches. Her white hair is akin to the color of moonlight hitting fog late at night. A thin gold strand with a teardrop shaped pearl rest around her forehead, neatly vanishing away into her hair. On the backs of each ear are silvery splotches that greatly. Each ear is pierced thrice, a scarab shaped earring on each ear for luck. Her face is a bit rounded, whitish eyebrows expressing her mood. Her eyes are a soft shimmering blue like the Nile. Her lips are painted the red closest to a desert sunset. Multiple strands of golden chain drape her shoulders and neck. Her breasts are held in a white blouse that is fairly open, heavy breasts shown off through the low v-cut of the shirt. Loose white lacing runs from the top of the shirt downwards, the shirts' V ending below her navel. The sleeves are puffy and drawn in at the elbow, the bell shaped sleeves sliced clear up to the elbow on the underside to allow full mobility. Despite the top's coverage her build shows, lithe and strong. An ankh hangs down to below her breasts, shining brilliantly when the sun hits it. Her right wrist is held with numerous bangles, the left in a thick and intricate beadwork bracelet.

ii. Dancing low on her hips is leatherwork with exquisite gold inlay, the band thick, laying over a tight little brown skirt that is barely decent. A long red silk tie is held neatly attached to the left side of her hip, tied to the low belt, a whip and flintlock pistol attached to the right for combat. Up each of her muscular thighs is a pair of high thigh stockings, the garters showing clipped to the stockings. Very soft light gray lace is attached to the top of the stockings, a bell on a small bow on the outside of each thigh. Her calves are thick, muscular, and toned. That serpentine tail is long, flexible and definitely aiding in her balance. She's lithe and toned, Those feet of hers, tucked neatly tucked into low on the ankle pointed toe leather boots with a very low heel. The boots are not polished leather but instead soft suede. SMELL: Khait is annointed with all the scents one might expect a woman to smell of. Myrrh, Lotus, Honey, wine, and the fragrant plants of Punt.

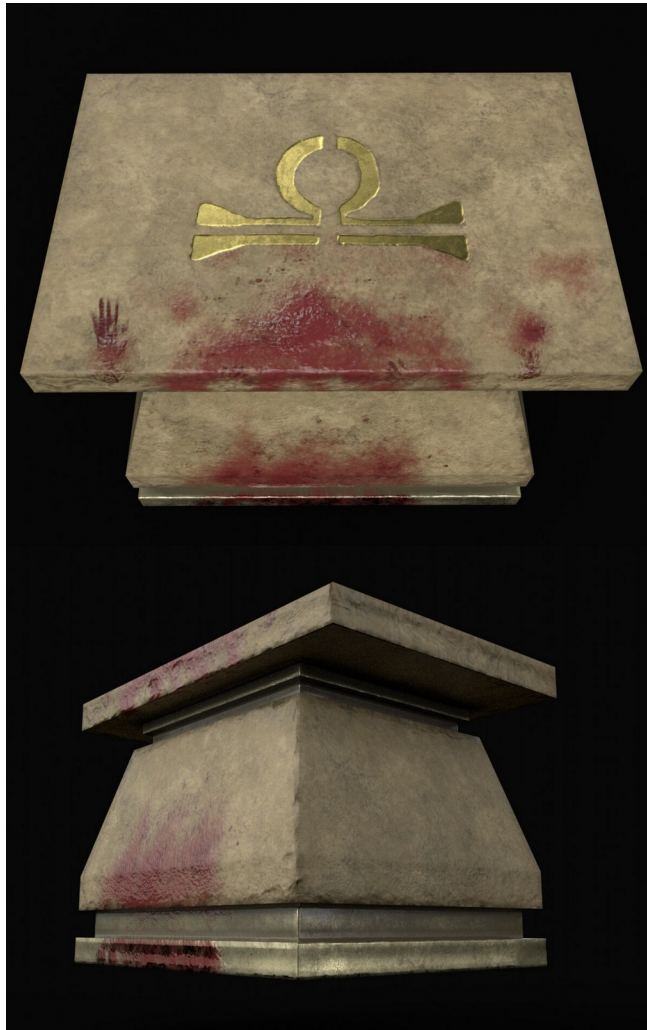
B. Cerberus

i. Should be a bit larger than the feline. His knot is too big for her, so his cream is spilling out everywhere. Knotted cock.

ii.



IV. Background (must interconnect with preceding and following panels)
A. See separate file.



Stone tablets/
altars/"beds" that the
women are being bred
on.
Its height is up to the
knees of the males, who
are standing and fucking
them. Ignore the blood.

